

{CATÁLOGO}

# VÁLVULAS SÉRIE 8.000



# VÁLVULAS DIRECIONAIS - SÉRIE 8000 - 1/8"

## CARACTERÍSTICAS TÉCNICAS

Pressão	Máxima de 10,5 kgf/cm <sup>2</sup> (150 psi)
Temperatura	-10°C a 80°C
Fluído	Ar comprimido filtrado e lubrificado
Construção	<i>Tipo Spool</i>
Vazão	0,56 m <sup>3</sup> /min (obtida a 7 kgf/cm <sup>2</sup> )

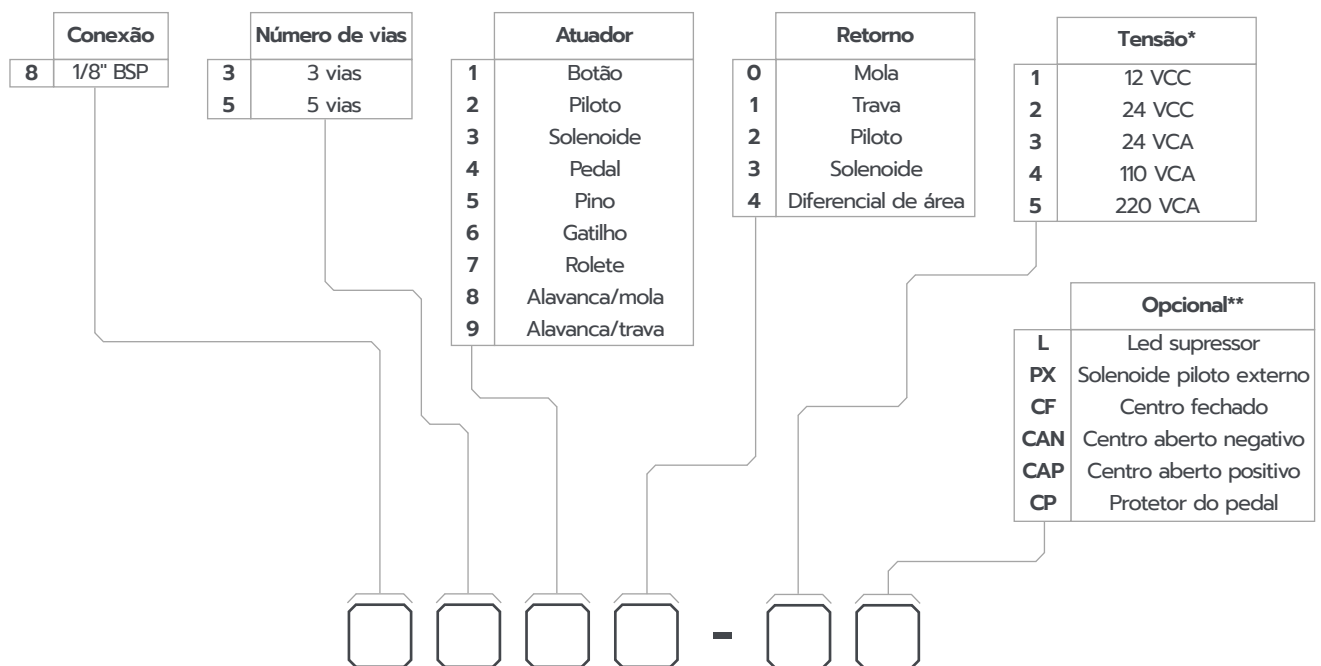


## MATERIAIS

Corpo	Alumínio injetado
Carretel	Zamak injetado
Êmbolo	Alumínio com Anodização Dura
Vedações	Buna-N



## CODIFICAÇÃO

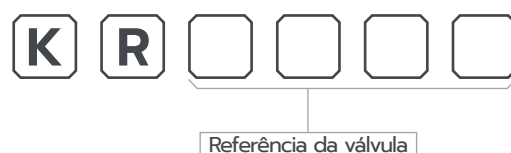


\* Utilizar referência de tensão somente quando atuador for solenóide.

\*\* As válvulas Centro Fechado (CF), Centro Aberto Negativo (CAN) e Centro Aberto Positivo (CAP) são 3 posições.

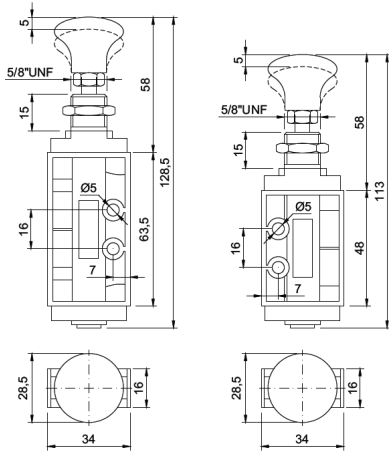
Obs.: Para válvula com atuador Solenóide e retorno mola, o retorno será substituído para diferencial de área.

## KIT DE REPARO

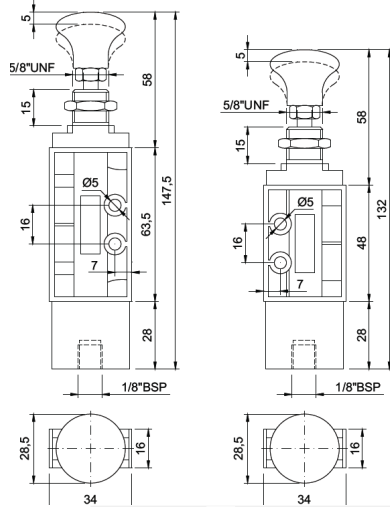


**DIMENSIONAL**

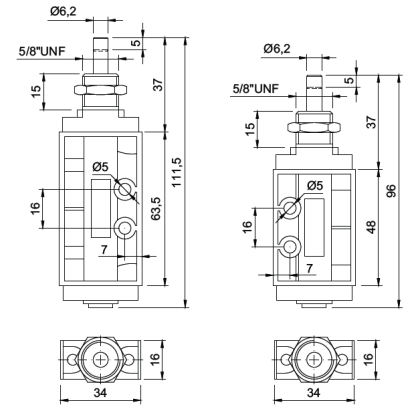
**Botão Trava/Mola 5 e 3 vias**



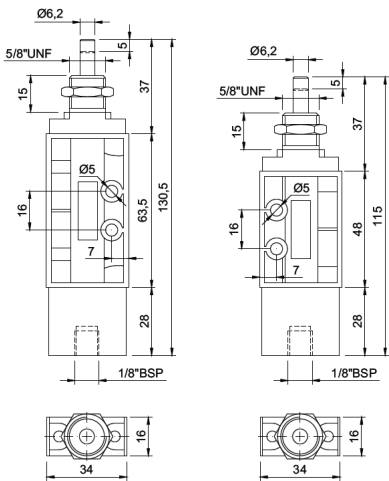
**Botão Piloto 5 e 3 vias**



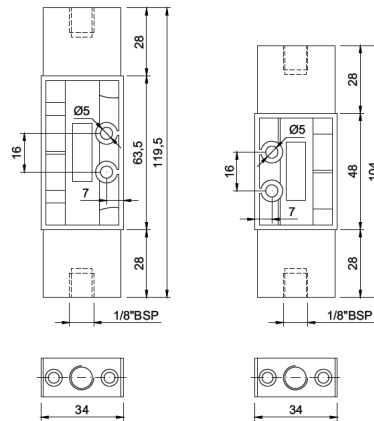
**Pino Mola 5 e 3 vias**



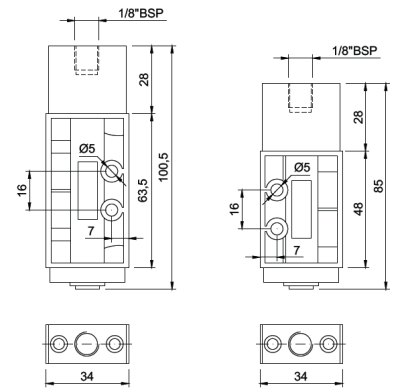
**Pino Piloto 5 e 3 vias**



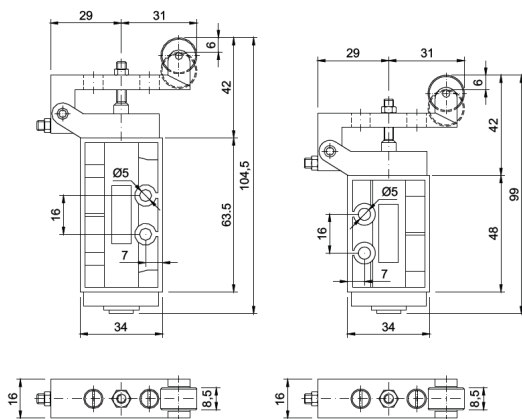
**Duplo Piloto 5 e 3 vias**



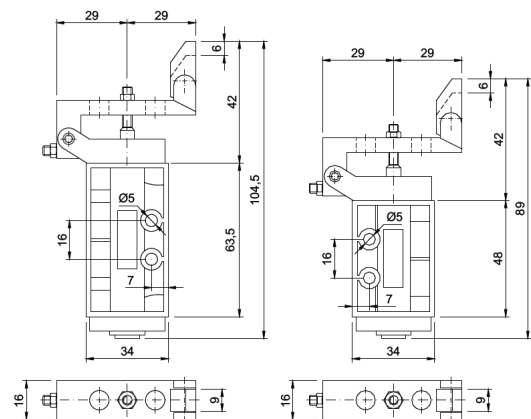
**Piloto Mola 5 e 3 vias**



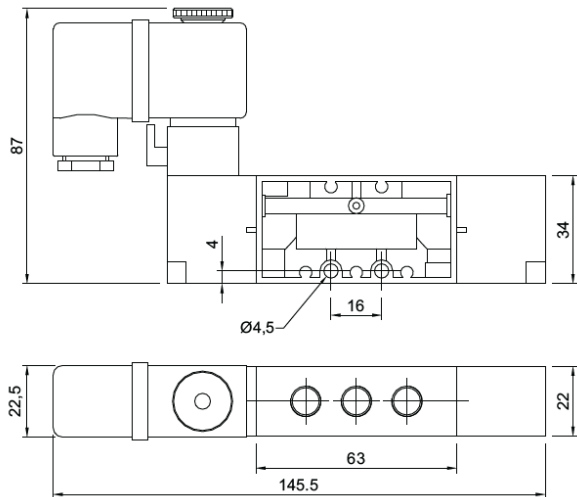
**Rolete Mola 5 e 3 vias**



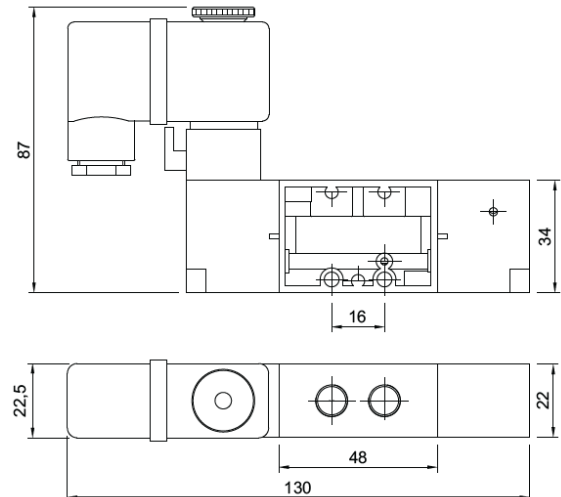
**Gatilho Mola 5 e 3 vias**



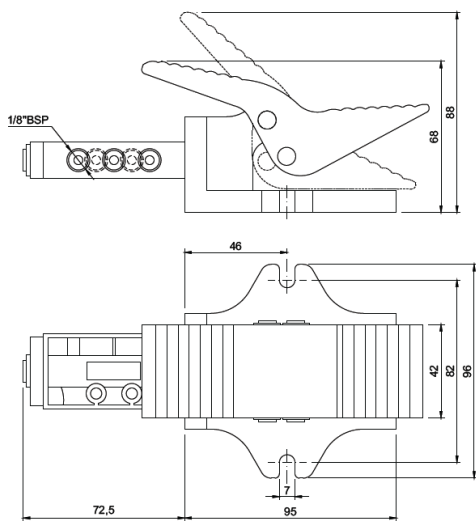
**Solenoide Diferencial 5 vias**



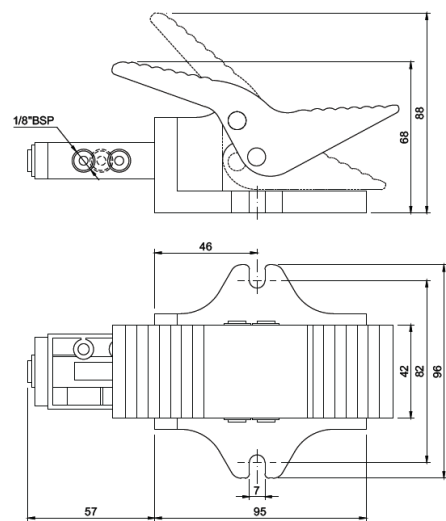
**Solenoide Diferencial 3 vias**



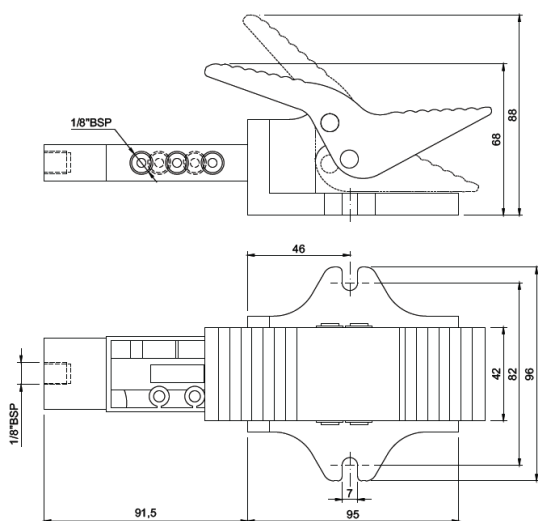
**Pedal Mola/Trava 5 vias**



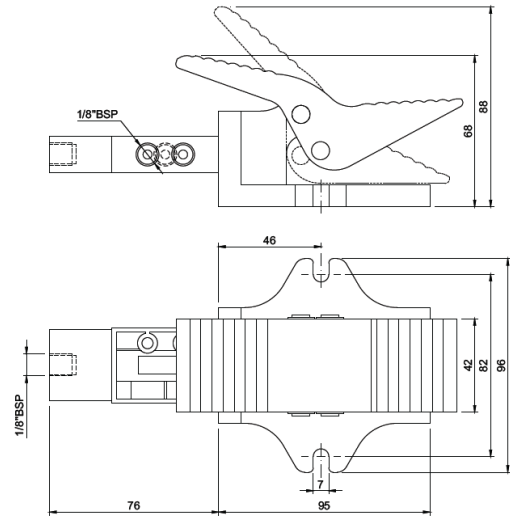
**Pedal Mola/Trava 3 vias**



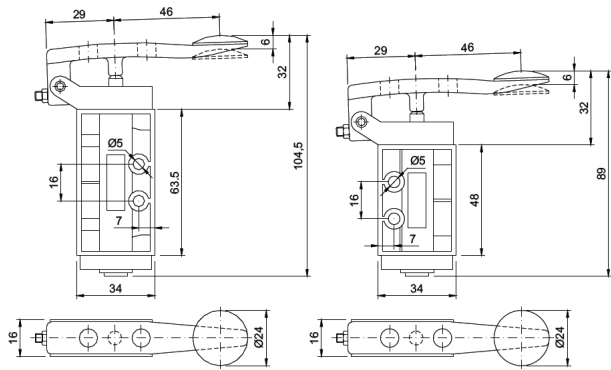
**Pedal Piloto 5 vias**



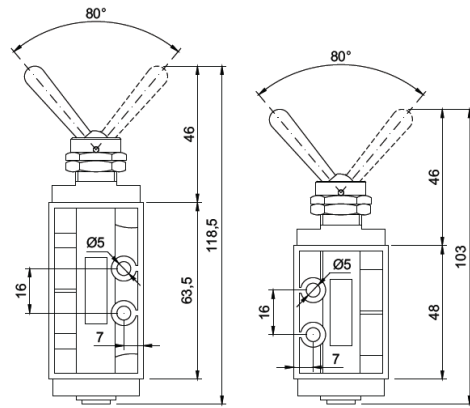
**Pedal Piloto 3 vias**



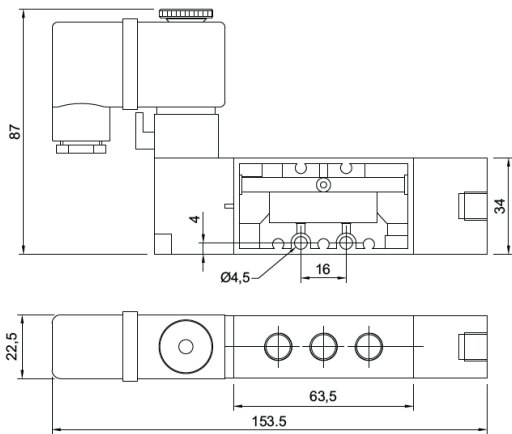
**Alavanca Mola 5 e 3 vias**



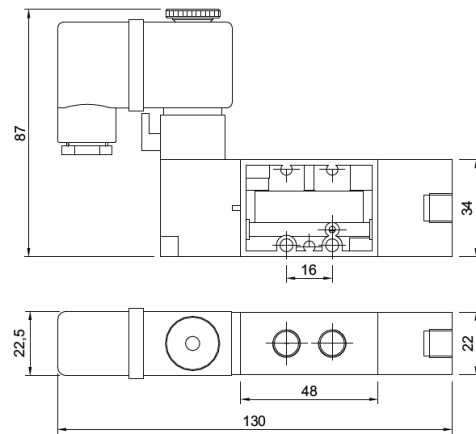
**Alavanca Trava 5 e 3 vias**



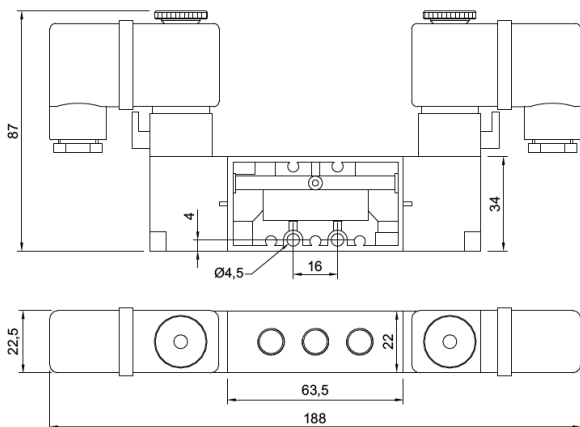
**Solenóide Piloto 5 vias**



**Solenóide Piloto 3 vias**



**Duplo Solenóide 5 vias**



**Duplo Solenóide 3 vias**

