

[CATÁLOGO]

# VÁLVULA POPPET 7.000



# VÁLVULA POPPET 1/4"

## CARACTERÍSTICAS TÉCNICAS

Pressão	Máxima de 10,5 kgf/cm <sup>2</sup> (150 psi)
Temperatura	-10°C a 80°C
Fluído	Ar comprimido filtrado e lubrificado
Vazão	0,6 m <sup>3</sup> /min a 7 kgf/cm <sup>2</sup>



## MATERIAIS

Corpo	Alumínio
Haste/êmbolo	Latão
Vedações	Buna-N
Molas	Inox

## CODIFICAÇÃO



\* Utilizar referência de tensão somente quando atuador for solenóide.

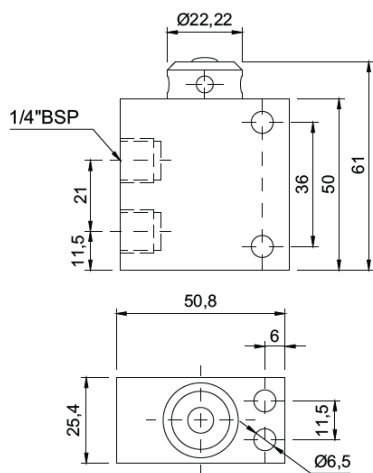
**Obs.:** Válvula de acionamento leve e retorno por mola.

## KIT DE REPARO

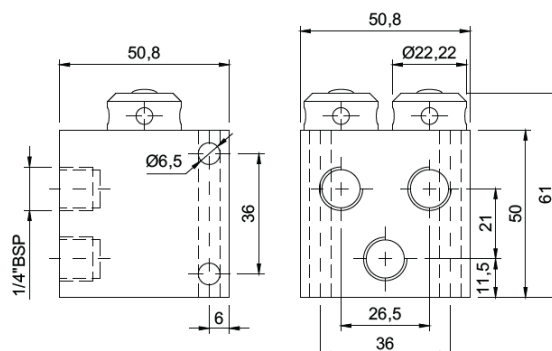


**DIMENSIONAL**

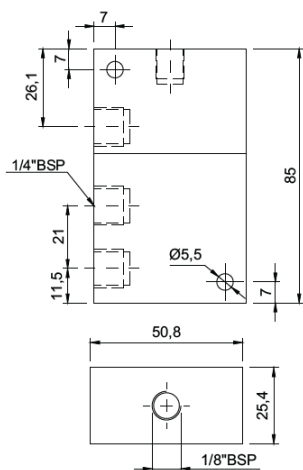
**Esfera Mola 3 Vias**



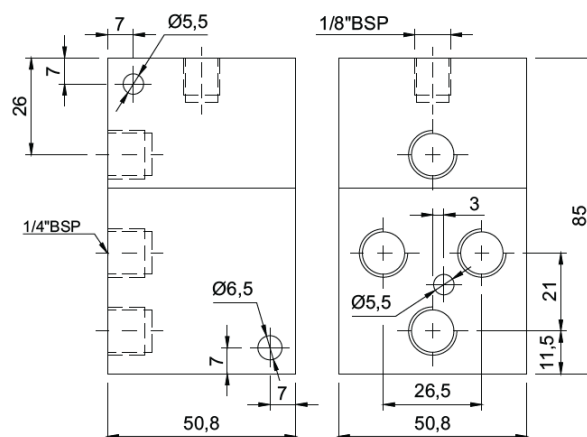
**Esfera Mola 4 Vias**



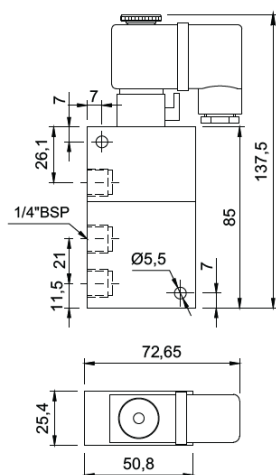
**Piloto Mola 3 Vias**



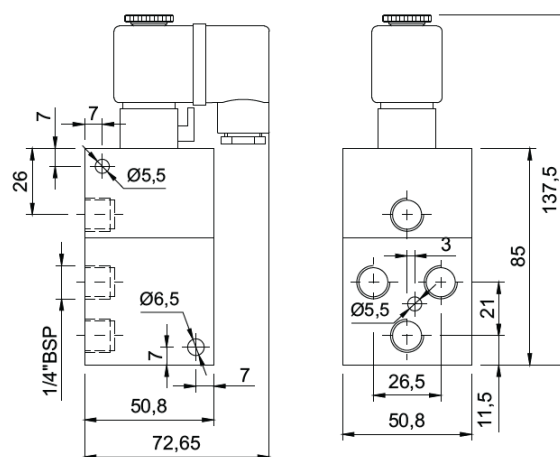
**Piloto Mola 4 Vias**



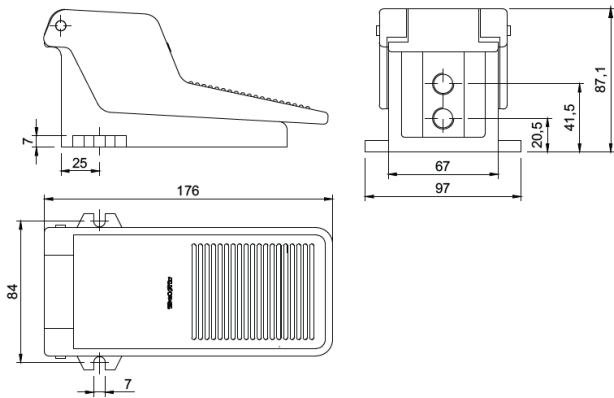
**Solenoide Mola 3 Vias**



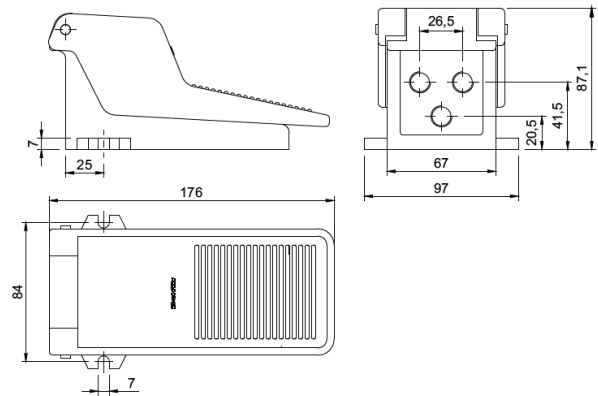
**Solenoide Mola 4 Vias**



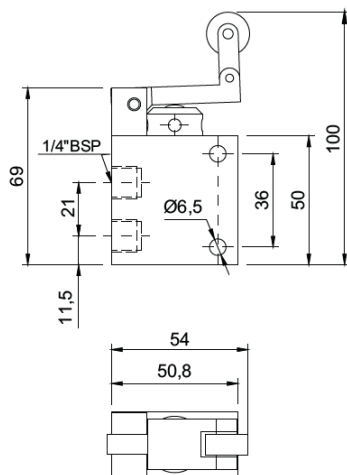
**Pedal Mola 3 Vias**



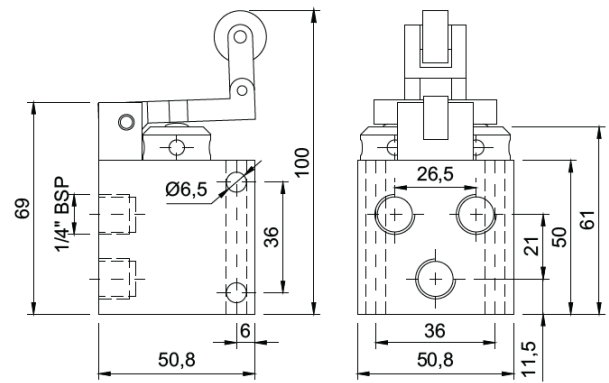
**Pedal Mola 4 Vias**



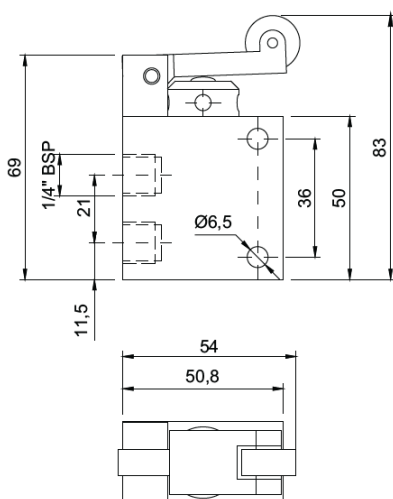
**Gatilho Mola 3 Vias**



**Gatilho Mola 4 Vias**



**Rolete Mola 3 Vias**



**Rolete Mola 4 Vias**

